

Real-estate values

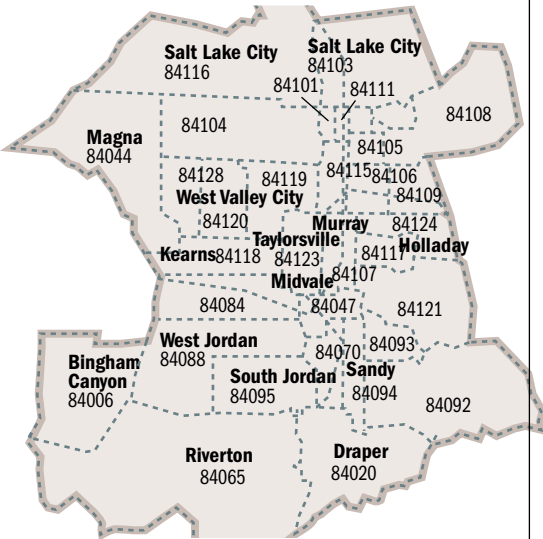
2nd quarter 2008 SINGLE-FAMILY HOMES

*Median price 2nd quarter 2008 compared with 2nd quarter 2007

SALT LAKE COUNTY

ZIP CODE	CITY	UNITS SOLD	MEDIAN PRICE	PERCENT CHANGE*
84128	West Valley	88	\$207,000	-7.77%
84124	Holladay	57	\$347,000	-14.64%
84123	Taylorsville/Murray	69	\$220,000	-2.87%
84121	Brighton/Cottonwood	114	\$327,000	-3.82%
84120	West Valley	123	\$195,500	2.68%
84119	West Valley	76	\$166,425	-10.74%
84118	Taylorsville/Keams	195	\$187,750	-1.80%
84117	Holladay	30	\$328,250	-14.63%
84116	Salt Lake City	59	\$177,660	4.51%
84115	South Salt Lake	61	\$190,000	-3.31%
84111	Salt Lake City	10	\$182,000	-12.08%
84109	Salt Lake City	48	\$322,500	-4.87%
84108	Salt Lake City	55	\$379,900	-18.39%
84107	Murray	36	\$226,000	-7.19%
84106	Salt Lake City	96	\$259,750	-1.98%
84105	Salt Lake City	126	\$275,000	-12.84%
84104	Salt Lake City	44	\$142,500	5.59%
84103	Salt Lake City	52	\$381,750	3.18%
84102	Salt Lake City	26	\$285,500	6.75%
84101	Salt Lake City	3	\$162,000	20.00%
84095	South Jordan	146	\$374,484	7.00%
84094	Sandy	64	\$249,450	-2.89%
84093	Sandy	52	\$352,000	0.95%
84092	Sandy	87	\$365,000	-7.01%
84088	West Jordan	131	\$275,000	-4.65%
84084	West Jordan	188	\$222,250	-5.06%
84070	Sandy	46	\$228,100	-5.74%
84065	Riverton	115	\$300,000	-13.17%
84047	Midvale	46	\$218,400	-3.58%
84044	Magna	91	\$169,000	-6.11%
84020	Draper	124	\$373,350	-9.81%
84006	Bing. Can./Copperton	2	\$182,900	4.51%

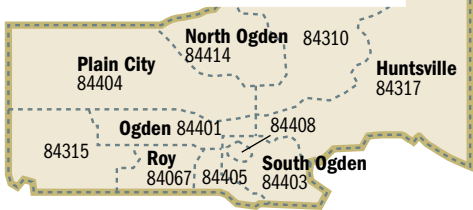
COUNTY MEDIAN **\$249,000** Down: **1.61%**



WEBER COUNTY

ZIP CODE	CITY	UNITS SOLD	MEDIAN PRICE	PERCENT CHANGE*
84067	Roy	177	\$165,000	-1.49%
84310	Eden	9	\$365,000	-8.75%
84315	Hooper	19	\$270,000	3.85%
84317	Huntsville	3	\$345,000	-10.74%
84401	Marriott/Slaterville	122	\$173,950	52.59%
84403	South Ogden	123	\$163,000	20.74%
84404	Farr West	229	\$149,497	0.65%
84405	Riverdale	72	\$164,000	-4.37%
84414	North Ogden	73	\$220,000	-4.70%

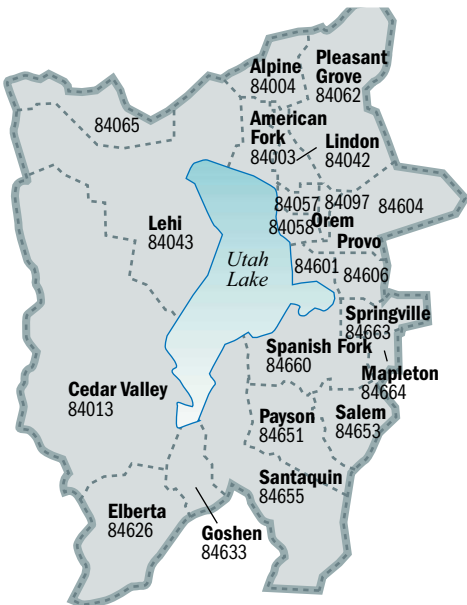
COUNTY MEDIAN **\$166,850** Up: **4.28%**



UTAH COUNTY

ZIP CODE	CITY	UNITS SOLD	MEDIAN PRICE	PERCENT CHANGE*
84664	Mapleton	11	\$385,000	-3.38%
84663	Springville	38	\$191,500	-1.74%
84660	Spanish Fork	96	\$222,250	-0.34%
84655	Santaquin	23	\$210,000	2.44%
84653	Salem	11	\$290,000	-14.43%
84651	Payson	41	\$196,000	-10.71%
84606	Provo	36	\$212,000	4.18%
84604	Provo	45	\$272,500	-6.03%
84601	Provo	61	\$207,000	2.00%
84097	Orem	27	\$273,000	6.06%
84062	Pleasant Grove	65	\$259,000	-17.75%
84058	Orem	29	\$232,000	6.67%
84057	Orem	57	\$210,000	-4.16%
84043	Lehi	175	\$263,000	-3.31%
84042	London	10	\$328,975	-21.48%
84013	Cedar Valley	1	\$171,500	-21.15%
84004	Alpine	14	\$419,000	-26.90%
84003	American Fork	80	\$277,815	-12.84%

COUNTY MEDIAN **\$235,000** Down: **4.08%**



DAVIS COUNTY

ZIP CODE	CITY	UNITS SOLD	MEDIAN PRICE	PERCENT CHANGE*
84010	Bountiful	64	\$250,000	0.04%
84014	Centerville	21	\$256,900	-1.95%
84015	Clearfield	249	\$176,000	-4.86%
84025	Farmington	44	\$308,000	-6.64%
84037	Kaysville	57	\$266,500	-23.20%
84040	Layton	60	\$235,500	-12.62%
84041	Layton	160	\$204,500	-0.92%
84054	North Salt Lake	47	\$254,000	-3.42%
84075	Syracuse	98	\$255,000	-2.58%
84087	Woods Cross	46	\$238,950	1.72%

COUNTY MEDIAN **\$225,000** Down: **1.75%**



FOR SALE