

# Real-estate values

## 1st quarter 2008 SINGLE-FAMILY HOMES

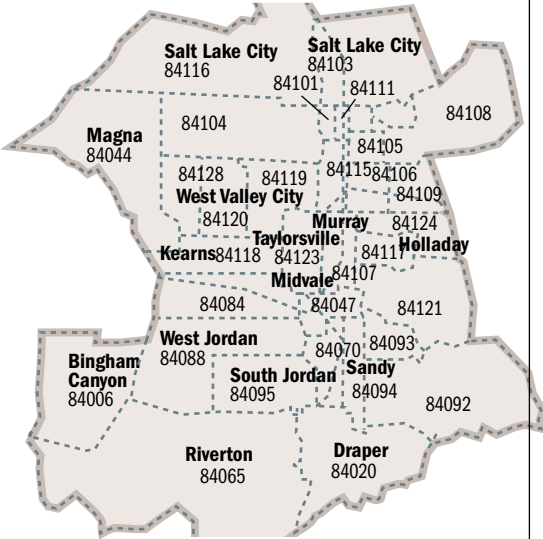
\*Median price 1st quarter 2008 compared with 1st quarter 2007

PLEASE SEE RELATED STORY ON PAGE A1

### SALT LAKE COUNTY

ZIP CODE	CITY	UNITS SOLD	MEDIAN PRICE	PERCENT CHANGE*
84128	West Valley	50	\$215,525	1.66%
84124	Holladay	25	\$332,000	-2.17%
84123	Taylorsville/Kearns	54	\$248,000	11.46%
84121	Brighton/Cottonwood	44	\$315,000	-3.08%
84120	West Valley	79	\$193,000	4.32%
84119	West Valley	70	\$169,500	-5.41%
84118	Taylorsville/Kearns	155	\$185,000	0.82%
84117	Holladay	23	\$380,000	9.20%
84116	Salt Lake City	47	\$177,000	9.26%
84115	South Salt Lake	37	\$168,300	-0.71%
84111	Salt Lake City	11	\$185,000	9.63%
84109	Salt Lake City	35	\$330,000	5.94%
84108	Salt Lake City	45	\$415,000	4.01%
84107	Murray	28	\$232,500	-2.70%
84106	Salt Lake City	69	\$259,900	-3.99%
84105	Salt Lake City	56	\$265,000	-7.02%
84104	Salt Lake City	57	\$145,900	10.95%
84103	Salt Lake City	32	\$392,500	-3.51%
84102	Salt Lake City	12	\$190,830	-30.61%
84101	Salt Lake City	2	\$372,000	168.59%
84095	South Jordan	109	\$345,000	-4.17%
84094	Sandy	68	\$250,000	-1.96%
84093	Sandy	40	\$313,750	-7.17%
84092	Sandy	39	\$380,000	-7.61%
84088	West Jordan	108	\$255,000	-3.77%
84084	West Jordan	153	\$222,000	-1.33%
84070	Sandy	32	\$230,950	-0.45%
84065	Riverton	87	\$322,000	5.50%
84047	Midvale	26	\$220,500	7.46%
84044	Magna	65	\$179,900	8.39%
84020	Draper	83	\$399,900	4.53%
84006	Bingham Canyon	2	\$201,500	NA

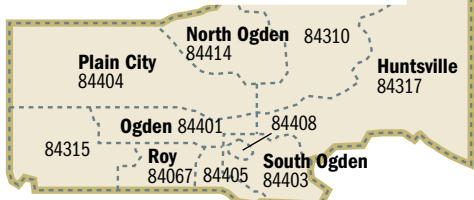
COUNTY MEDIAN **\$242,000 UP: 0.41%**



### WEBER COUNTY

ZIP CODE	CITY	UNITS SOLD	MEDIAN PRICE	PERCENT CHANGE*
84067	Roy	118	\$162,900	1.18%
84310	Eden	11	\$535,000	15.88%
84315	Hooper	16	\$259,950	-7.28%
84317	Huntsville	3	\$705,000	71.12%
84401	Marriott/Slaterville	96	\$138,450	10.76%
84403	South Ogden	73	\$129,750	3.80%
84404	Farr West	177	\$148,000	5.71%
84405	Riverdale	58	\$184,750	16.01%
84414	North Ogden	74	\$240,000	9.09%

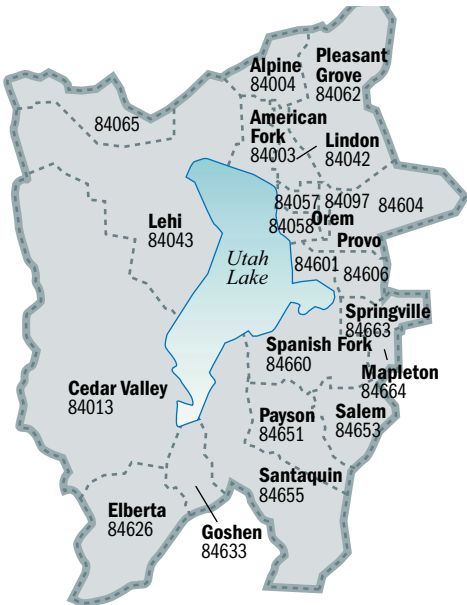
COUNTY MEDIAN **\$162,500 UP: 7.62%**



### UTAH COUNTY

ZIP CODE	CITY	UNITS SOLD	MEDIAN PRICE	PERCENT CHANGE*
84664	Mapleton	6	\$259,500	-32.16%
84663	Springville	37	\$193,000	-0.97%
84660	Spanish Fork	62	\$217,500	1.73%
84655	Santaquin	15	\$215,000	0.05%
84653	Salem	13	\$247,000	-12.57%
84651	Payson	32	\$210,700	14.51%
84606	Provo	20	\$186,000	-1.06%
84604	Provo	23	\$255,000	9.68%
84601	Provo	40	\$204,150	12.79%
84097	Orem	17	\$247,800	-17.92%
84062	Pleasant Grove	69	\$243,000	-7.25%
84058	Orem	19	\$183,000	-11.17%
84057	Orem	38	\$207,500	3.36%
84043	Lehi	138	\$249,500	-1.27%
84042	Lindon	8	\$304,995	-2.01%
84013	Cedar Valley	2	\$242,200	-11.65%
84004	Alpine	4	\$470,745	-23.46%
84003	American Fork	61	\$254,000	-15.78%

COUNTY MEDIAN **\$229,940 DOWN: 2.03%**



### DAVIS COUNTY

ZIP CODE	CITY	UNITS SOLD	MEDIAN PRICE	PERCENT CHANGE*
84010	Bountiful	49	\$229,000	-8.40%
84014	Centerville	24	\$280,350	3.49%
84015	Clearfield	181	\$170,000	1.19%
84025	Farmington	34	\$293,750	-3.53%
84037	Kaysville	56	\$266,000	3.50%
84040	Layton	52	\$236,500	-3.47%
84041	Layton	144	\$196,250	0.00%
84054	North Salt Lake	43	\$245,000	-10.91%
84075	Syracuse	73	\$255,000	6.69%
84087	Woods Cross	39	\$242,500	6.62%

COUNTY MEDIAN **\$220,000 UP: 0.65%**



**FOR SALE**